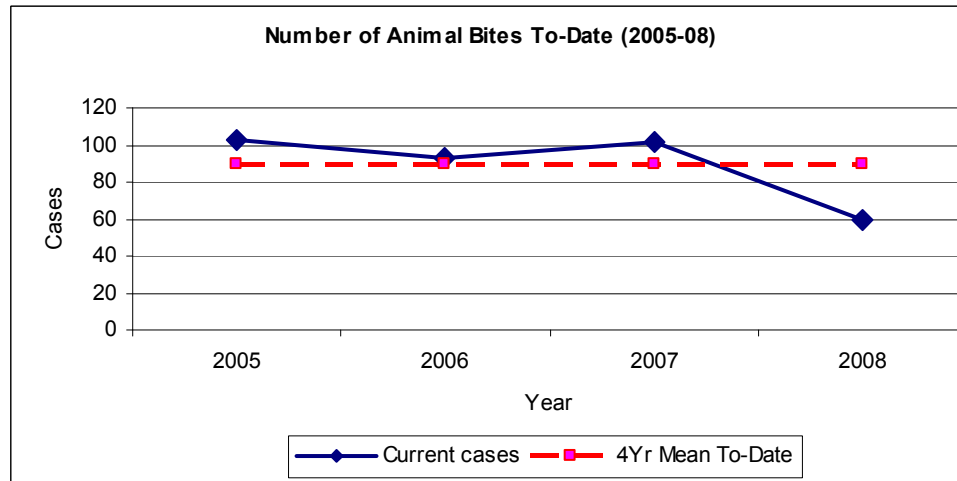


Joplin

Animal bites

The year 2008 had the lowest cases of animal bites (60) in the city of Joplin as of the end of June since 2004. This number was also below the 4-year mean of about 88 cases.

Figure 1



Source: Crystal Reports

Campylobacteriosis

Campylobacteriosis cases have consistently remained around the 5-year mean of 2 cases for the data period January through end of June since 2003. The highest number of cases was 3 and the lowest was 2 cases during this time period.

Hepatitis C Infection

Acute hepatitis C infection continue to be endemic in Joplin city with a range of zero (0) to 2 cases as of mid year for the years, 2003 through 2008. However, no case has been reported during this period in 2008.

Chronic hepatitis C infection has had the most cases being reported in the city of Joplin. As of the end of June, the highest and the lowest number of cases reported for the years 2003 through 2008 was 65 and 28 respectively. In 2008, the number of cases was around the 5-year mean of 40 and slightly above the five year median (37.5).

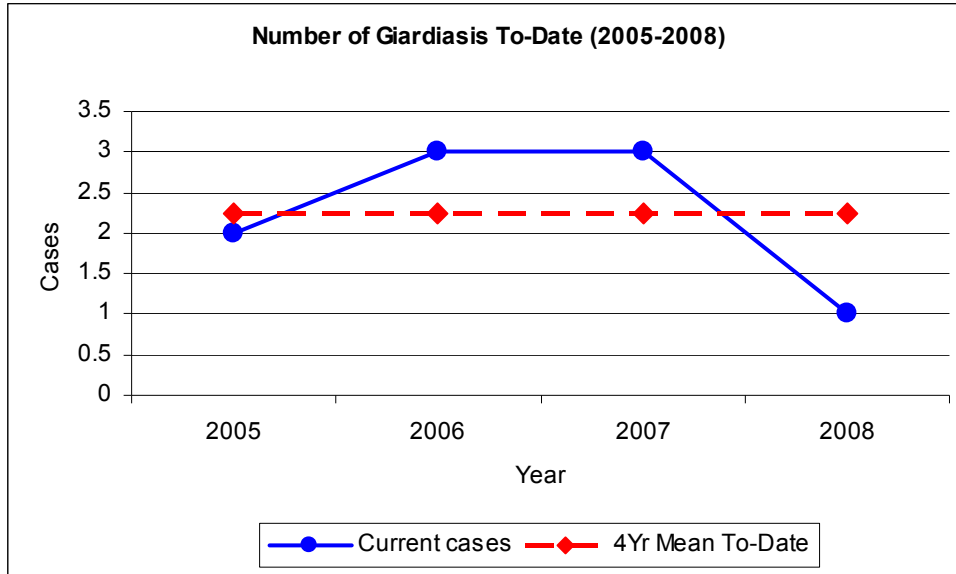
Rocky Mountain spotted fever

The cases of Rocky Mountain spotted fever reported in 2008 were 7, accounting for the most cases since 2004 as of the mid year. The median and the 5-year mean were 2 and 3 respectively.

Giardiasis

The number of Giardiasis cases was at the lowest (1) in 2008 as well as below the 5-year mean of 2 cases. The highest and the lowest number of cases since 2004 through 2008 month- to-date were 3 and 1 respectively.

Figure 2

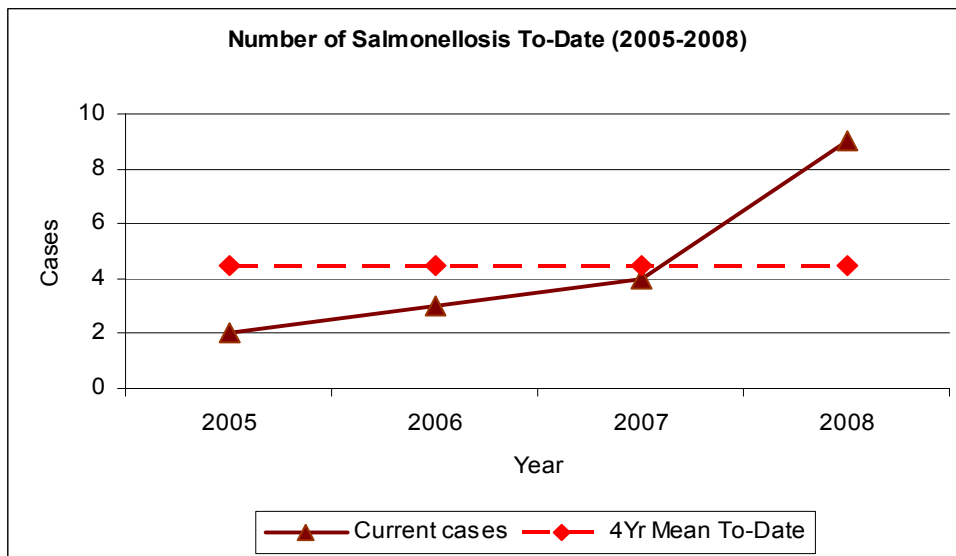


Source: Crystal Reports

Salmonellosis

The number of reported salmonellosis cases in the city of Joplin for the data period January through June (2004 – 2008) has been highest in 2008 accounting for 8 cases, which is also significantly above 5-year mean of 4.2 cases and a median of 3 cases.

Figure 3



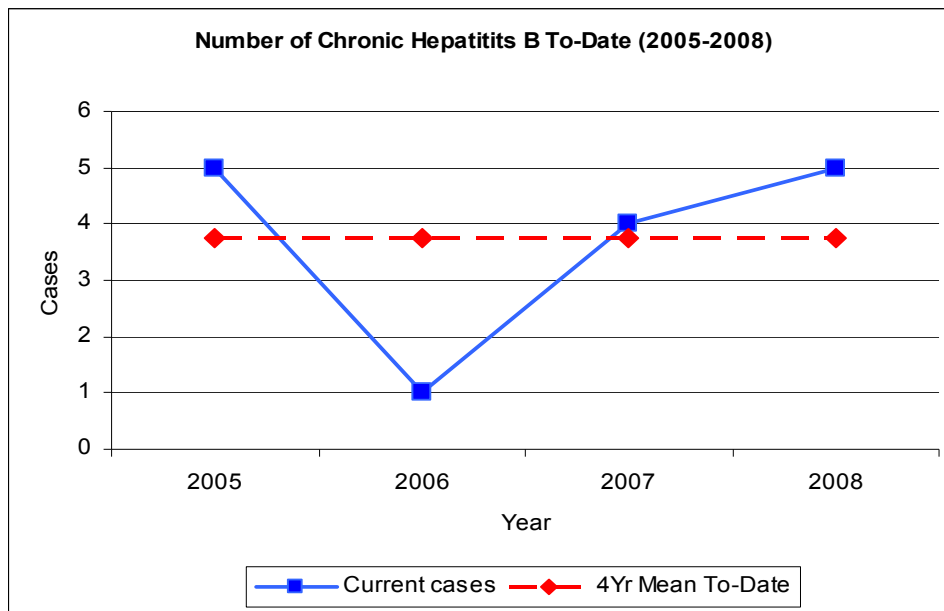
Source: Crystal Reports

Hepatitis B Infections

There were two cases of acute hepatitis B infection in 2008 which shows a decrease from 2007 (4 cases) during the same period. This was the first decline for this endemic condition since 2004.

Data also indicate that the cases of chronic hepatitis B infection in 2008 remain within the 5-year mean of 2 cases as of the mid year. The highest and the lowest recorded since 2003 through 2008 during the six months was 4 and 0 respectively. In 2008, there were 2 cases.

Figure 4



Source: Crystal Reports

Varicella

There is a significant drop of Varicella cases in 2008 (no cases) from 2007 (6 cases). Three cases of Varicella were reported in 2005 and 2006 in each of the two years.

Re-emerging conditions

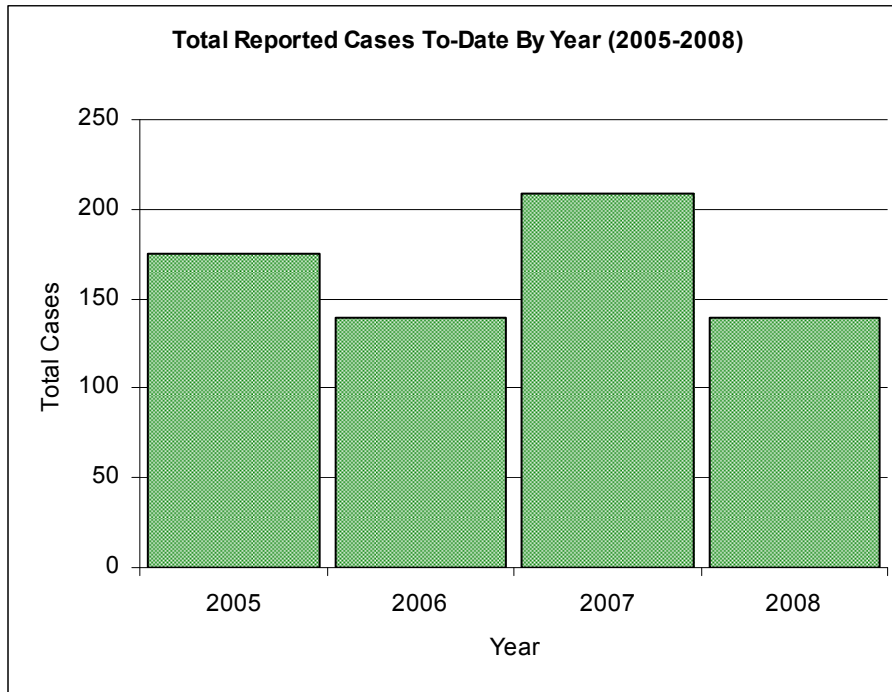
Some illnesses that have not occurred since 2003/04 but have been reported in 2008 include:

- Streptococcus Pneumonia <5 yrs
- Streptococcus Disease Group A Invasive
- Shigellosis
- Shiga Toxin Non E. Coli
- Legionellosis
- Dengue fever

Two cases of Meningococcal disease have been reported in 2008 while one case was reported in 2007 in Joplin area.

The overall number of cases reported for the first half of the year is presented in figure 5, with the most cases reported on 2007.

Figure 5



Source: Crystal Reports

Jasper County

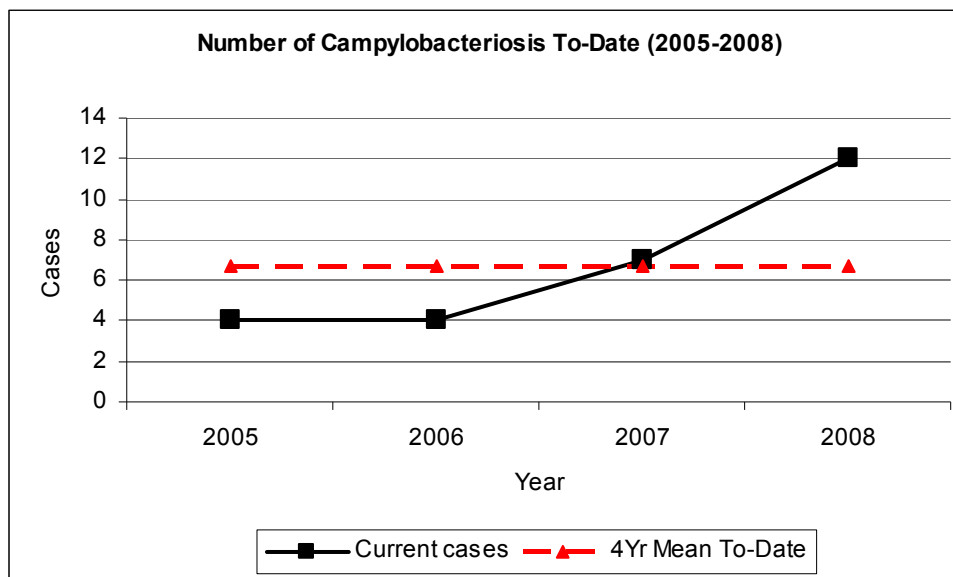
Animal bites

The number of reported animal bite cases in Jasper County as of end of June shows a significant decrease from 2006 (56 cases) to 2007 (45 cases). In 2008, there were 48 reported cases which were below the 4-year mean of 53 as of mid year.

Campylobacteriosis

The year 2008 recorded the highest reported cases of campylobacteriosis (12 cases) in six years as of mid year. This was an increase of 5 cases since 2007 as well as being above the 4-year mean of 6.75 cases since 2004.

Figure 1



Source: Crystal Reports

Salmonellosis

The number of reported salmonellosis cases in Jasper County for the data period January through June (2004–2008) has remained around the 5-year mean and median of 4.4 and 4 cases respectively. The highest reported number of cases was 6 while the lowest was 3. There were 5 reported salmonellosis cases in 2008.

Varicella

Mid year data for the years, 2005 to 2008 indicate the presence of Varicella (chicken pox) in the county with the highest number of cases (32 cases) reported in 2006. There were 9 cases in each of the years, 2007 and 2008. The 5-year mean was 11.2 cases while the median was 9 cases.

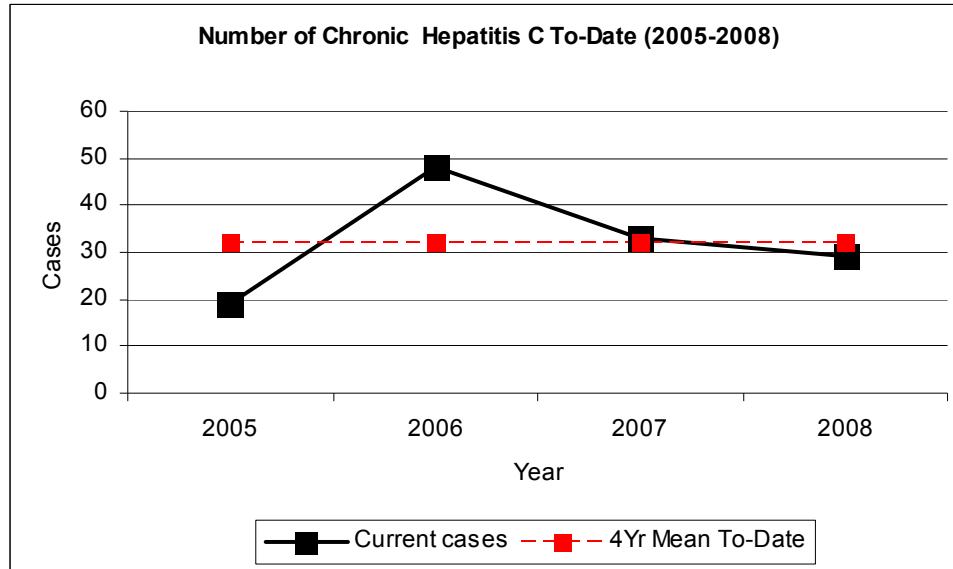
Rocky Mountain spotted fever

The number of Rocky Mountain spotted fever cases reported in 2008 was 2, accounting for the second lowest reported cases since 2003 as of the end of June. The 5-year median and mean were 5 and 4.8 respectively. The highest reported cases were 10 in 2006.

Chronic Hepatitis C infection

Chronic hepatitis C infection is the most reported illness in Jasper County. As of the end of June, the highest and the lowest number of cases reported for the years 2003 through 2008 was 47 and 21 respectively. In 2008, there were 29 reported cases, which was below the 4-year mean of about 32 cases.

Figure 2



Source: Crystal Reports

Other commonly occurring (endemic) diseases/conditions in Jasper County include;

- Cryptosporidiosis
- Ehrlichiosis HME
- Giardiasis
- Chronic Hepatitis B infection

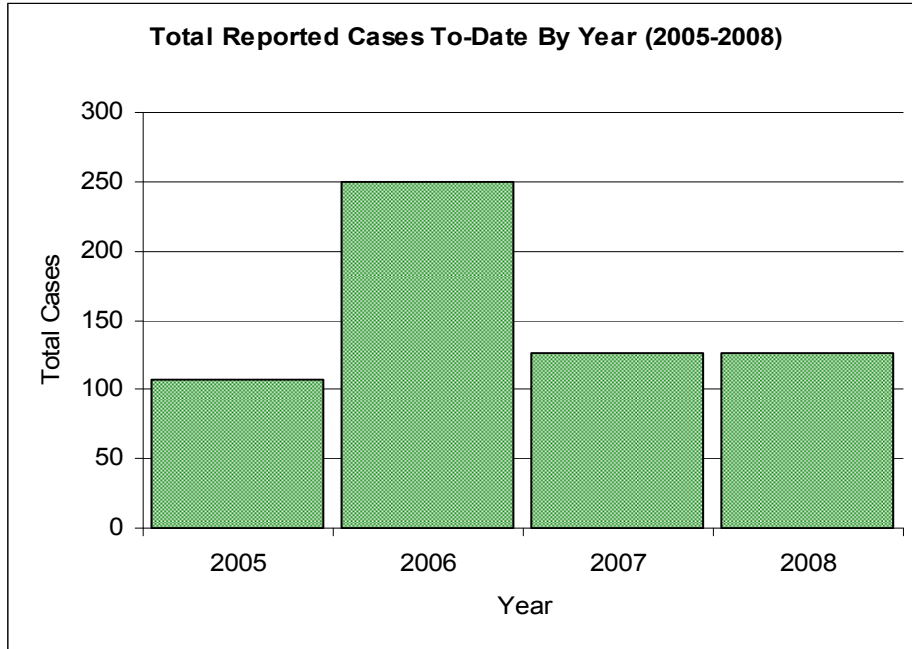
Some re-emerging conditions in Jasper County

Some illnesses that have been reported only in 2008 and none in the last 5 years include:

- E. Coli Shiga Toxin Positive (8 cases)
- Hepatitis B (Pregnancy) prenatal (2 cases)
- Legionellosis (1 case for both 2007 and 2008)
- Listeriosis (3 cases)
- Lyme (1 case)

The total reported cases in Jasper County were highest in 2006 as shown in figure 3

Figure 3



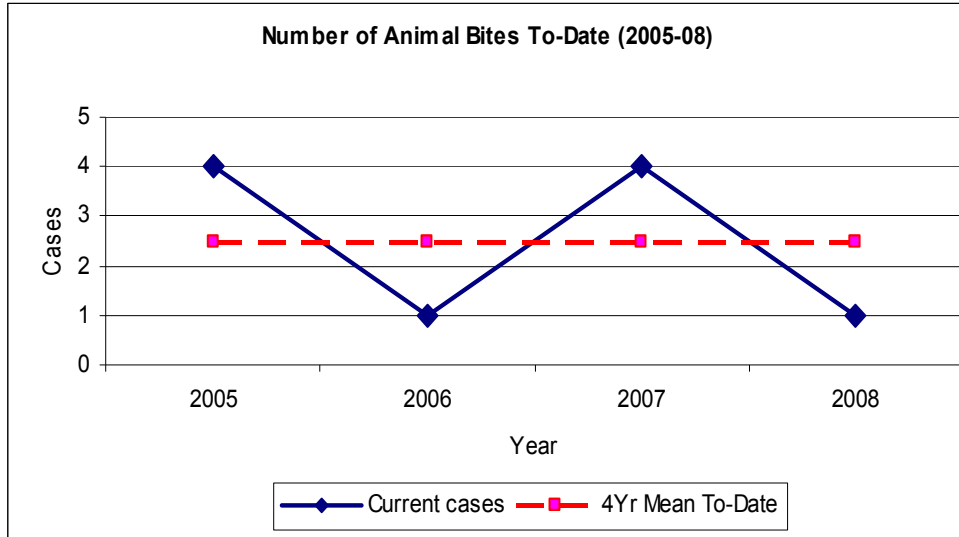
Source: Crystal Reports

Barton

Animal bites

As of the June, the year 2008 had one of the lowest reported cases (1 case) of animal bites in Barton County. The 4-year mean was 2.5 cases and higher than the 2008 cases.

Figure 1

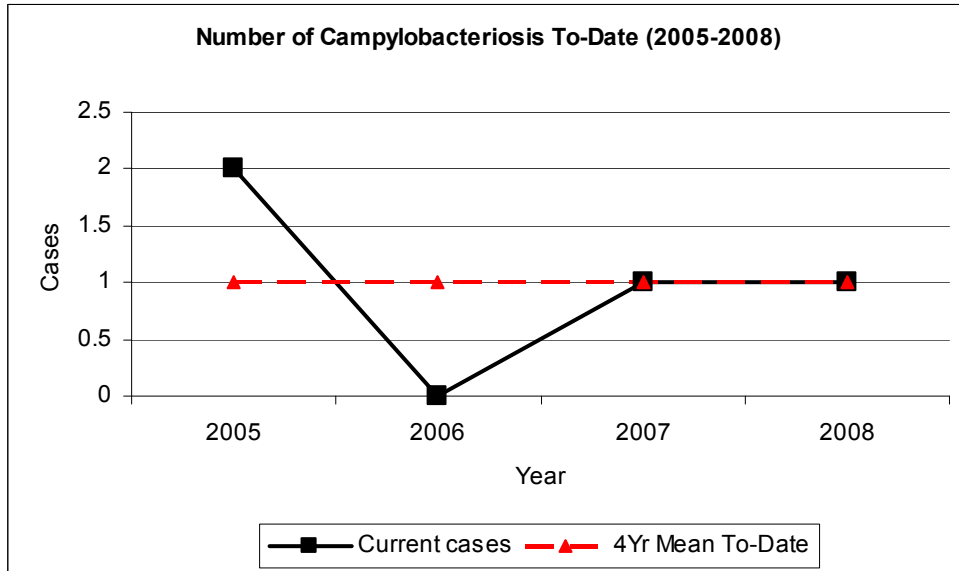


Source: Crystal Reports

Campylobacteriosis

Campylobacteriosis is endemic in Barton County although the available data show an average of one case in the past 5 years. There was one case reported in 2008.

Figure 2

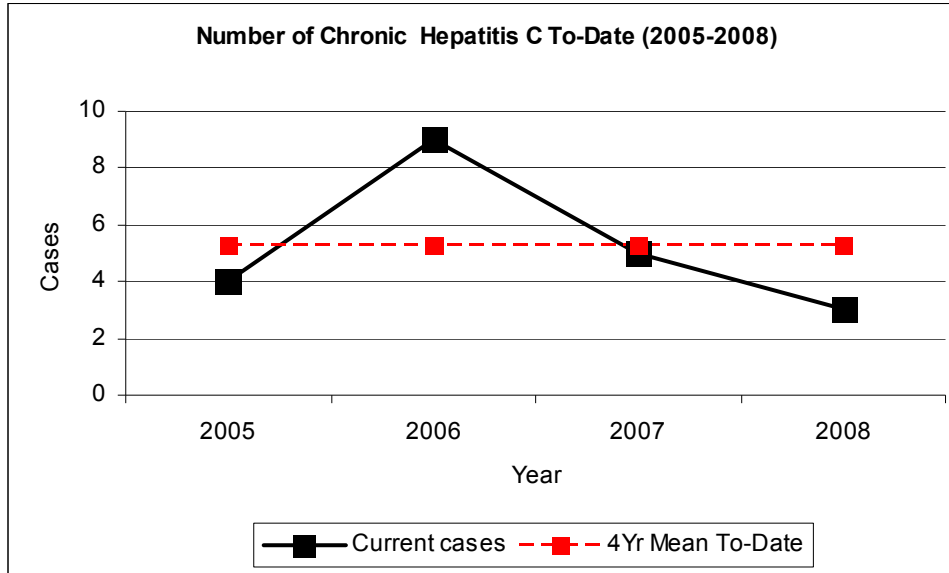


Source: Crystal Reports

Chronic hepatitis C infection

Chronic hepatitis C infection is the most reported illness in Barton County. The highest number of cases reported since 2003 was 9 in 2006. In 2008, there were 3 cases reported, which was less than the 4-year mean of 3 cases for the data period January through June.

Figure 3

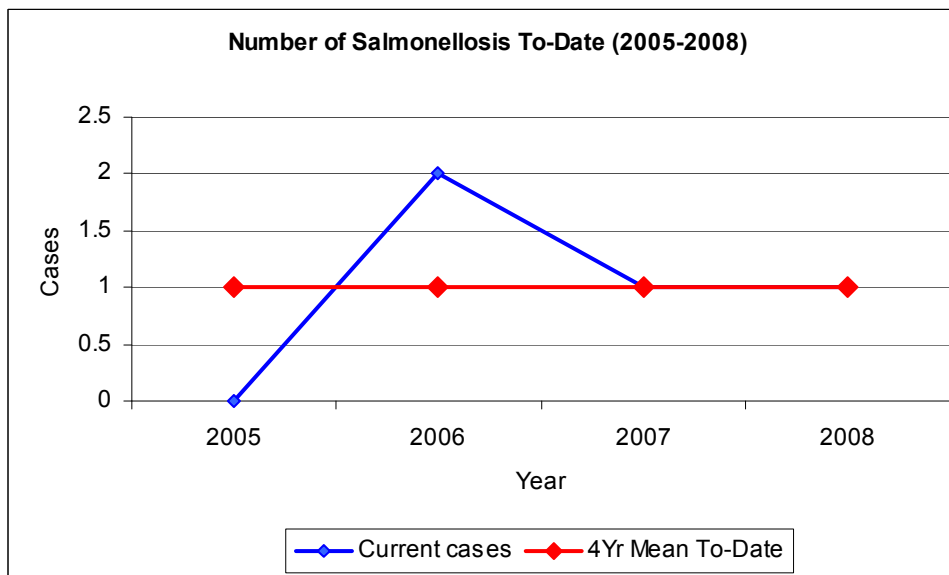


Source: Crystal Reports

Salmonellosis

Salmonellosis has been reported in the county since 2006. The available 3-year data shows an average of one case from January through June. There was one reported case in 2008.

Figure 4



Source: Crystal Reports

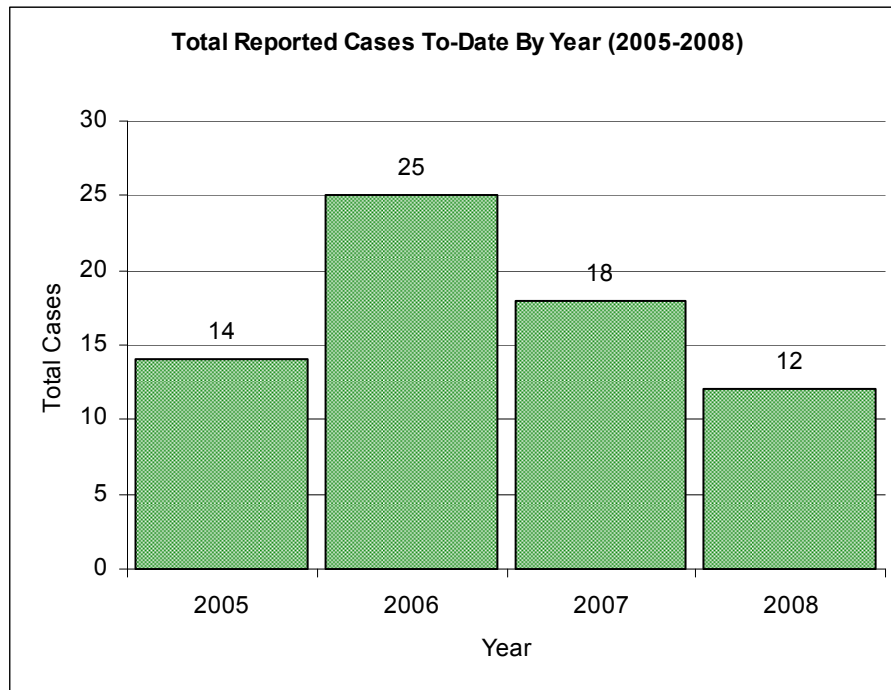
Re-emerging conditions

Some illnesses that have only been reported in 2008 and none in the last 5 years include:

- Ehrlichiosis HME (1 case)
- Ehrlichiosis, other or unspecified (1 case)
- Tularemia (1 case)

The total number of cases reported as of the end of June in the past 4 years is presented in figure 5, with the highest number reported in 2006 (25 cases).

Figure 5



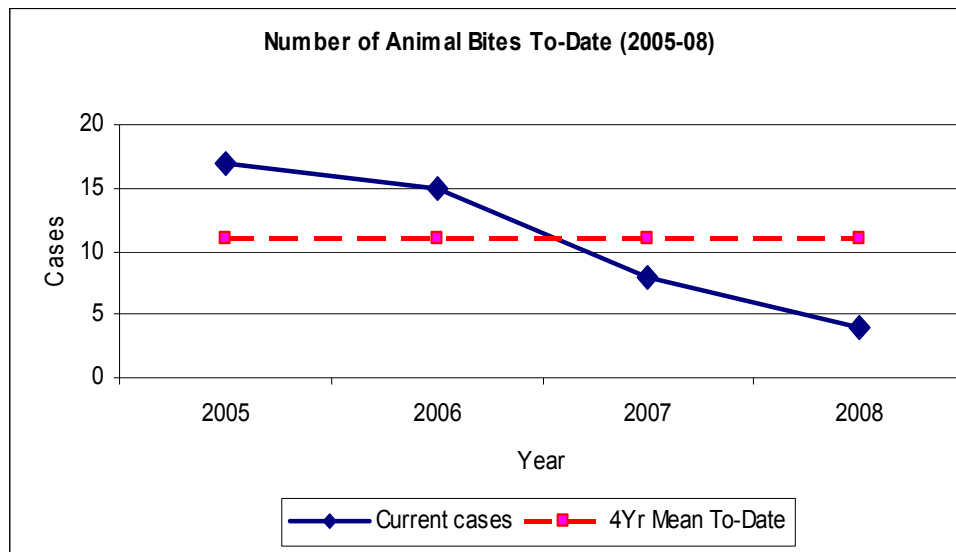
Source: Crystal Reports

McDonald County

Animal bites

The reported animal bite cases continue to decline in McDonald County since 2003. The highest reported cases during the first half of each year for the past 5 years was 20 cases in 2004 while the least reported was 4 cases in 2008.

Figure 1



Source: Crystal Reports

Campylobacteriosis

Campylobacteriosis is endemic in McDonald County with an average of 2 cases for the past 5 years. In 2008, there was only one case reported. The five year average and median are 1.8 and 2 cases respectively.

Salmonellosis

Based on 5-year data, salmonellosis has been reported in three years. In 2008, three cases were reported which is apparently the most cases reported since 2004.

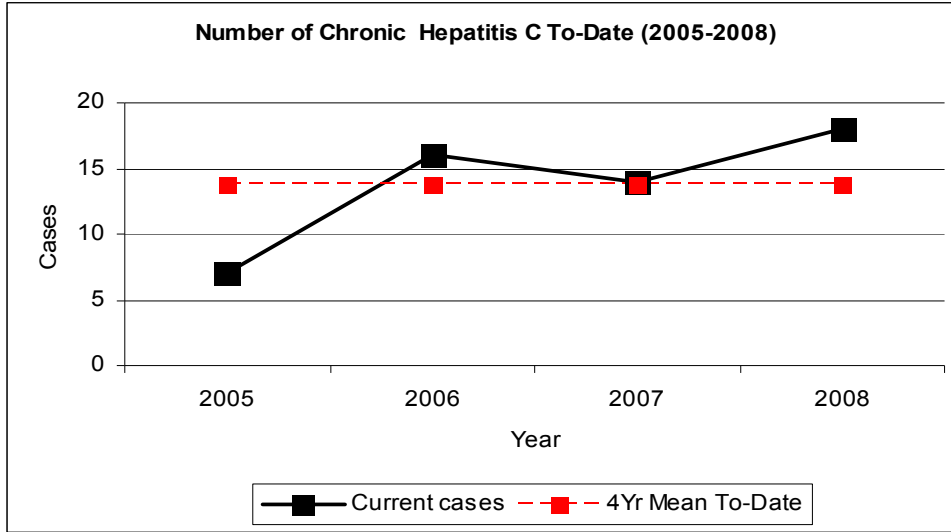
Rocky Mountain spotted fever

According to the available data since 5 years ago, RMSF has been reported each year in the county. There were 3 cases in 2008 in the county as of the end of June which was an increase of 2 cases since 2007 (1 case).

Chronic hepatitis C infection

Chronic hepatitis C infection is the most reported illness in McDonald County. The highest number of cases reported since 2003 was 18 in 2008, while the lowest was 6 in 2005. The 2008 cases exceed the 4-year average of 13 as of the end of June.

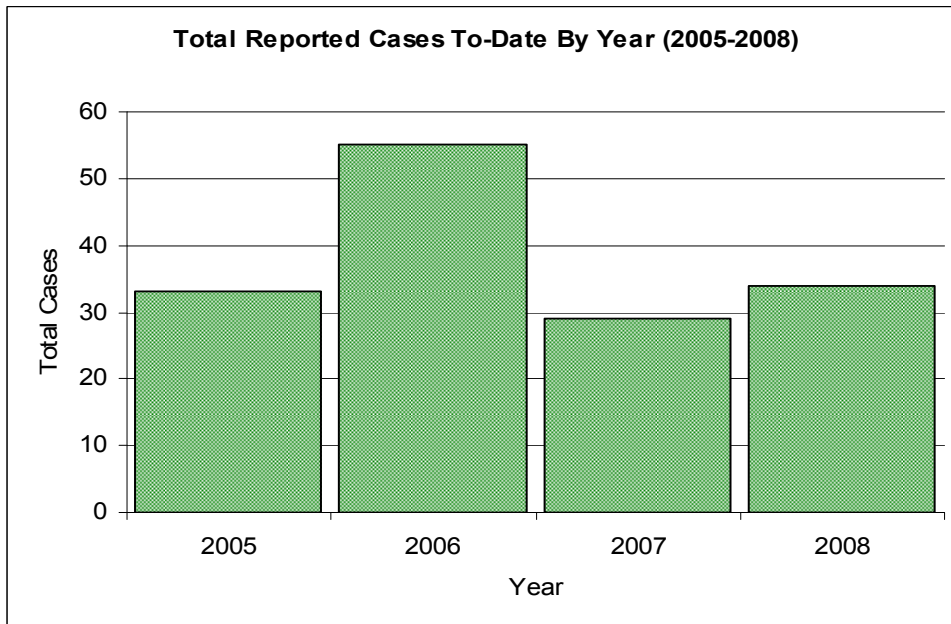
Figure 2



Source: Crystal Reports

The overall number of cases reported as of the end of June is presented in figure 3 with the highest number of cases reported in 2006.

Figure 3



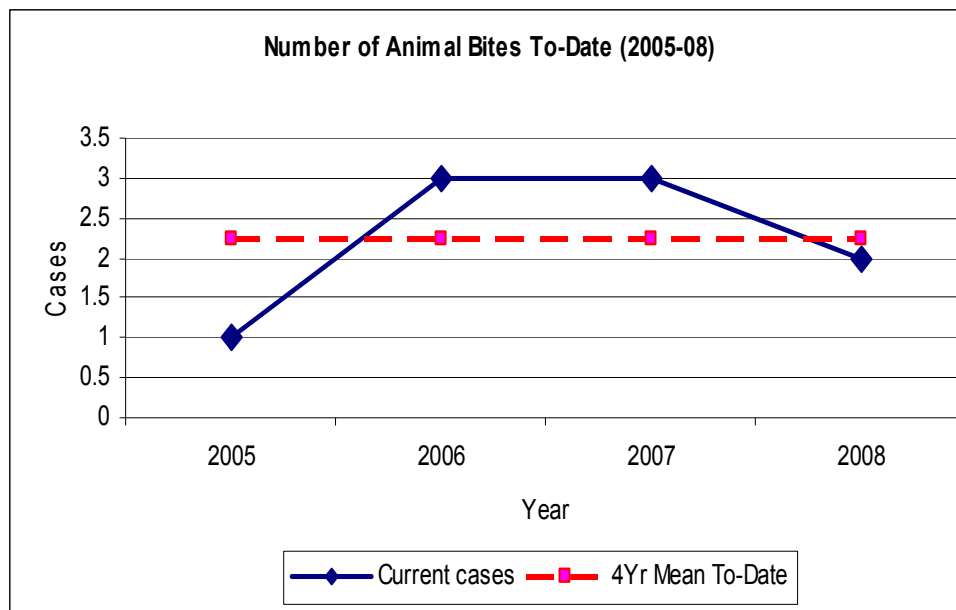
Source: Crystal Reports

Dade County

Animal bites

Animal bites are one of the most common conditions reported in Dade County. There were 2 cases reported in 2008 as of June, which was a drop since 2007 (3 cases). The most cases ever reported since 2003 were 5 in 2004.

Figure 1



Source: Crystal Reports

Re-emerging conditions

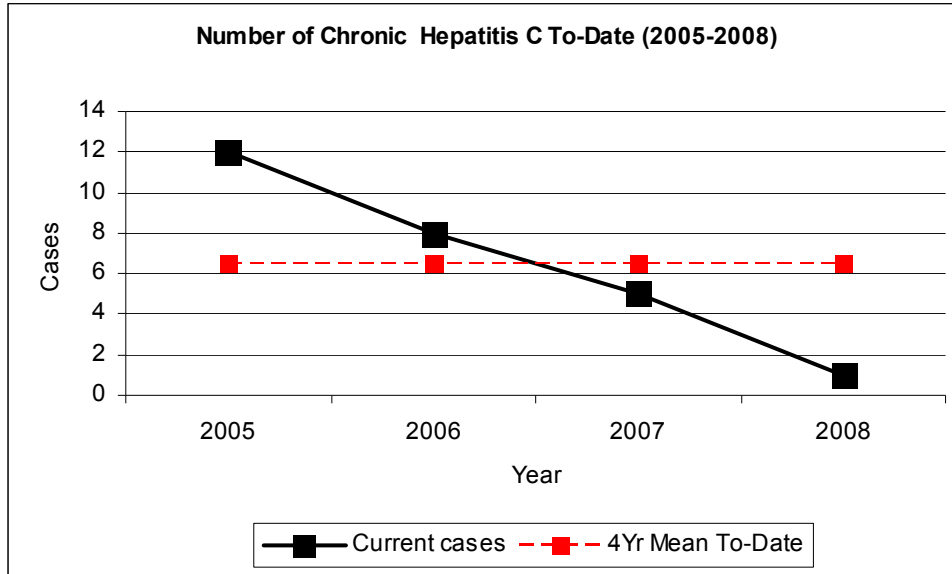
Some illnesses that have only been reported in 2008 and none in the last 4 years include:

- Campylobacteriosis (2 case)
- E. Coli O157 H7 (1 case)
- Ehrlichiosis HME (1)
- Giardiasis (1 case)
- Strep Pneumoniae, Drug Resistant (1 case)
- Salmonellosis (1 case in 2007)
- Creutzfeldt-Jakob Disease (1 case)

Chronic hepatitis C infection

Chronic hepatitis C infection is the most reported illness in Dade County. The highest number of cases reported since 2003 was 12 in 2005, while the lowest was one in 2008. The 4-year average was 6.5 cases.

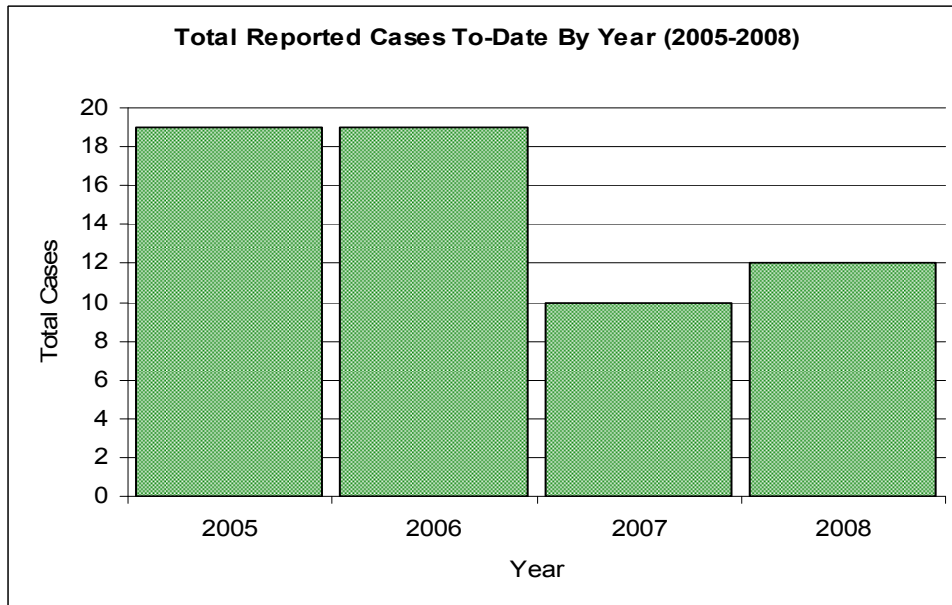
Figure 2



Source: Crystal Reports

The overall number of cases for the six month period is presented in figure 3, with the highest number of cases reported in 2005 and 2006 (19 cases each)

Figure 3



Source: Crystal Reports

Vernon County

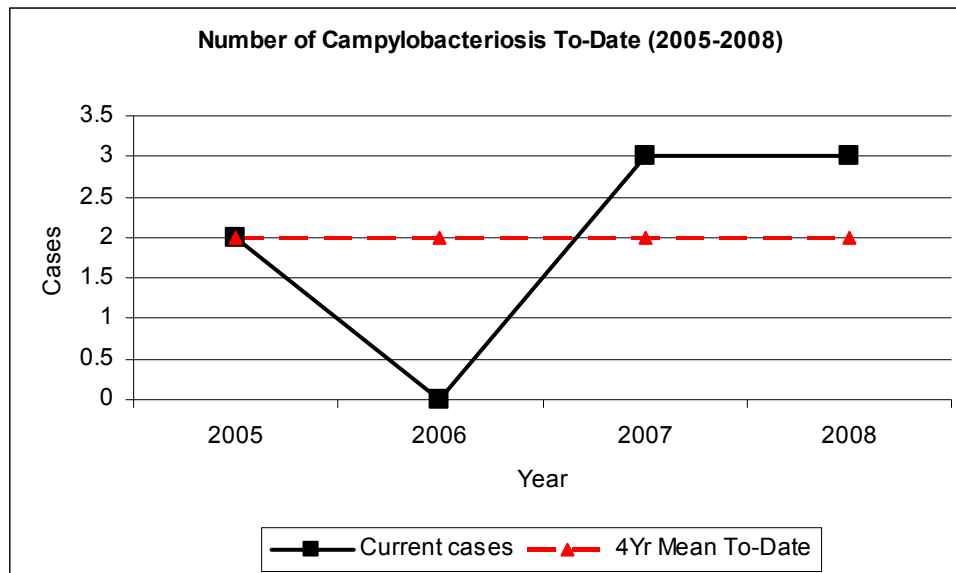
Animal bites

Animal bites are one of the most common conditions reported in Vernon County each year. There were two cases reported in 2008 as well as in 2007. The 5-year average as of the mid year was 1.6 cases while the median was 2 cases. This means that the 2008 cases were about the expected number of cases.

Campylobacteriosis

Campylobacteriosis is endemic in Vernon County and has a 4-year average of 2 cases. In 2008, there were 3 cases reported. The highest reported number of campylobacteriosis cases in Vernon County was 7 cases in 2004.

Figure 1



Source: Crystal Reports

Cryptosporidiosis

This is one of the highest reported conditions in Vernon County in the last two years; In 2007, there were 5 cases while 6 cases were reported in 2008. The 5-year average was 2.6 cases and therefore those cases reported in 2008 exceeded the average with more than twice the cases.

Ehrlichiosis HME

Ehrlichiosis HME is also a common illness in the county with a 5 year average of one case. However, there have been no cases reported in 2008 as of the end of June.

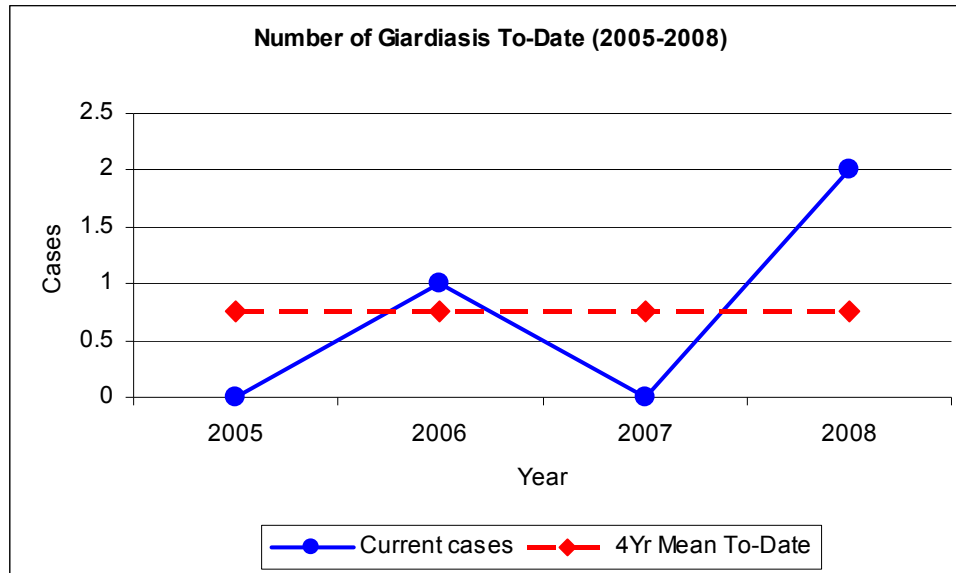
Lyme

Lyme has been reported in Vernon County in the last three years at an average of one case.

Giardiasis

Cases of Giardiasis have been fluctuating in the last 5 years. The most cases reported during the period between January and end of June in the last 4 years were 2 cases in 2008.

Figure 2



Source: Crystal Reports

Rocky Mountain spotted fever

Three cases were reported in 2008 as of the end of June therefore exceeding the 5-year average of one case. The highest reported cases in the last five years were 11 in 2006.

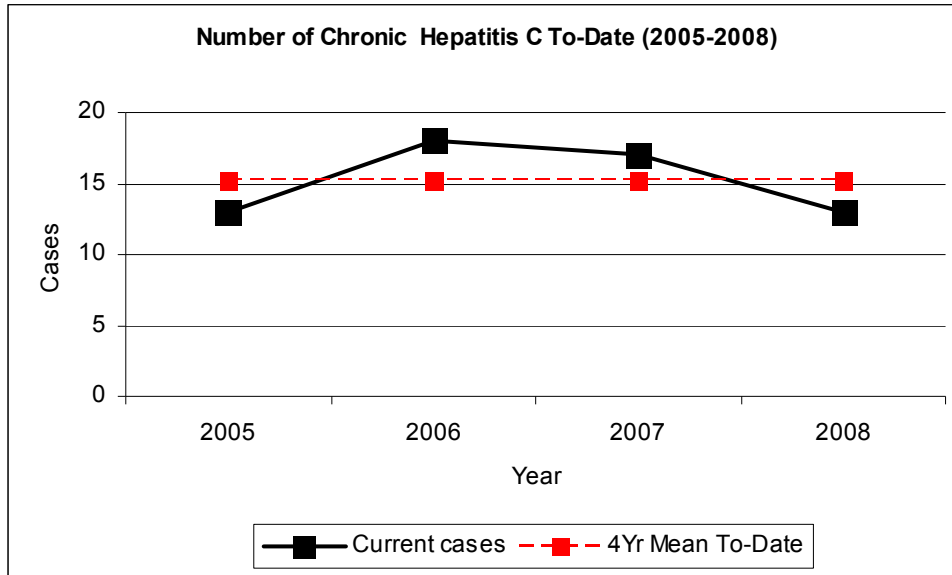
Salmonellosis

Based on 5-year data, salmonellosis has been reported each year in Vernon County at an average of 1.4 cases and 5-year median of one case. In 2008, one case was reported and also showed a decline from the previous year, 2007 (2 cases).

Chronic hepatitis C infection

Chronic hepatitis C infection is clearly the illness that is reported most in Vernon County. The highest number of cases reported since 2003 was 17 in 2007, while the lowest was 2 in 2004. The number of cases in 2008 was 8, which is a drastic drop from the previous year, 2007 which had 17 cases. Therefore, the year 2008 reported cases were below the 5-year average of 9.2 cases and equal to the 5-year median of 8 cases. (Figure 3)

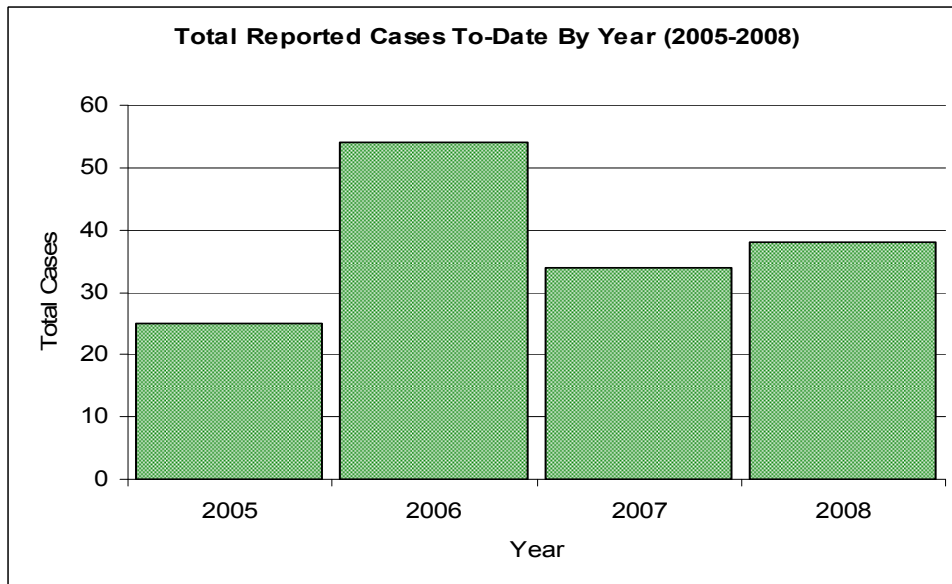
Figure 3



Source: Crystal Reports

The overall number of cases for the first half of the year is presented in figure 4, with the highest number of cases reported in 2006.

Figure 4



Source: Crystal Reports

Re-emerging conditions in Vernon County

Some illnesses that have only been reported in 2008 and none in the last 5 years include:

- Ehrlichiosis HGE (one case)
- Strep diseases, Group A Invasive (one case)

Other cases reported in 2008 and only one other year were:

- Chronic Hepatitis B infection
- Acute Hepatitis C infection